



St. Nicholas Place, Loughton, IG10

BUTLER & STAG



**St Nicholas Place is an exclusive development situated on a small private estate and is within close proximity to Loughton central line tube station and High Street shopping area**



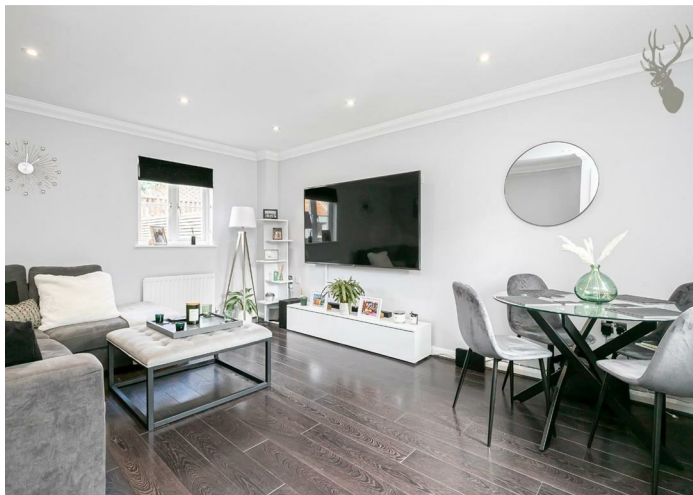
## Freehold

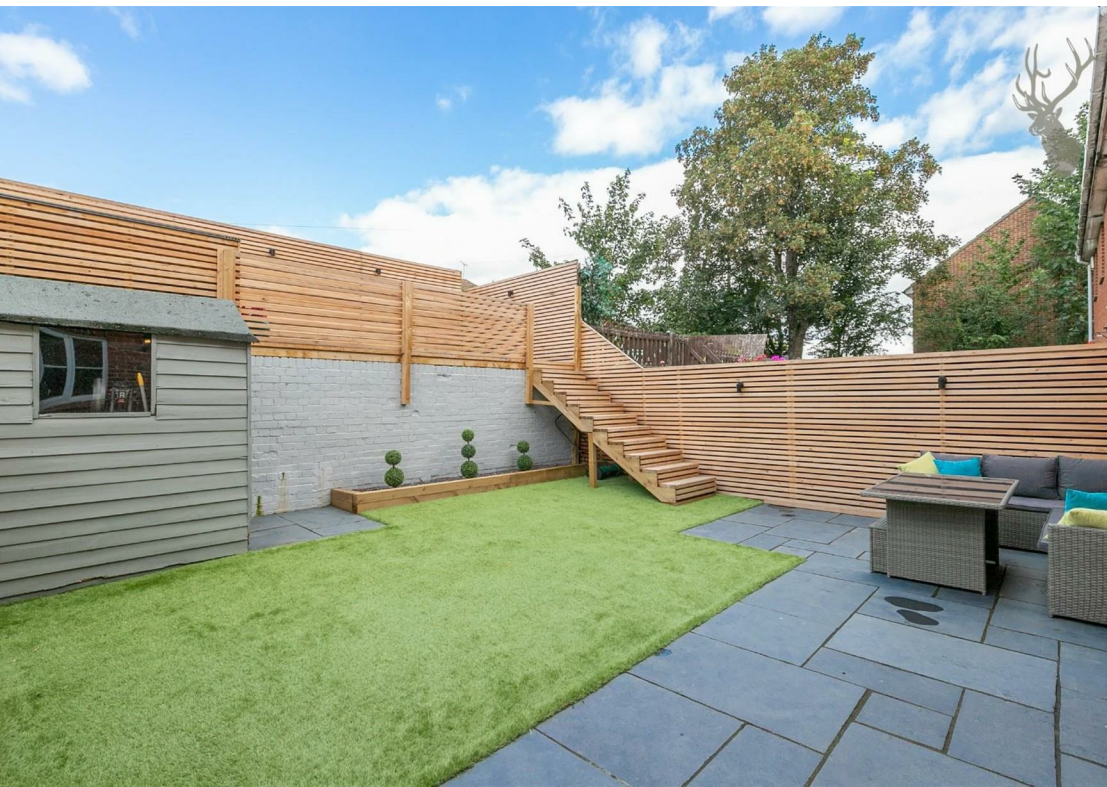
- Mid Terraced Home
- Two Bedrooms/Two Bathrooms
- Modern Kitchen/Breakfast Area
- Chain Free
- Master With En-Suite
- Allocated Parking

This stunning two bedroom family home boasts a large living room and a good size kitchen diner with modern appliances, allocated off street parking and down stairs W/C.

The first floor offers two good sized bedrooms and a family bathroom with the master bedroom also including an en-suite. Outside benefits from a mature rear garden with stairs leading to a decked area perfect for those summer evenings.

Loughton is known for its scenic views being on the borders of Epping Forest. It has excellent transport links into London with Loughton Underground Station, the M11 and M25 being close by. With its highly regarded state and private schools within easy reach and its stylish and popular boutiques and abundance of eateries/bars making it a desirable location.





## St Nicholas Place, LG10

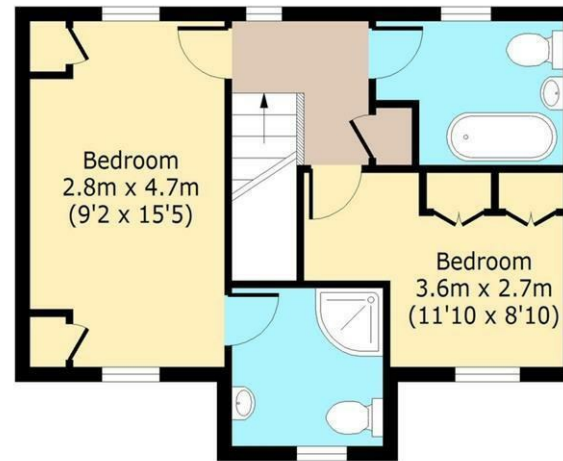
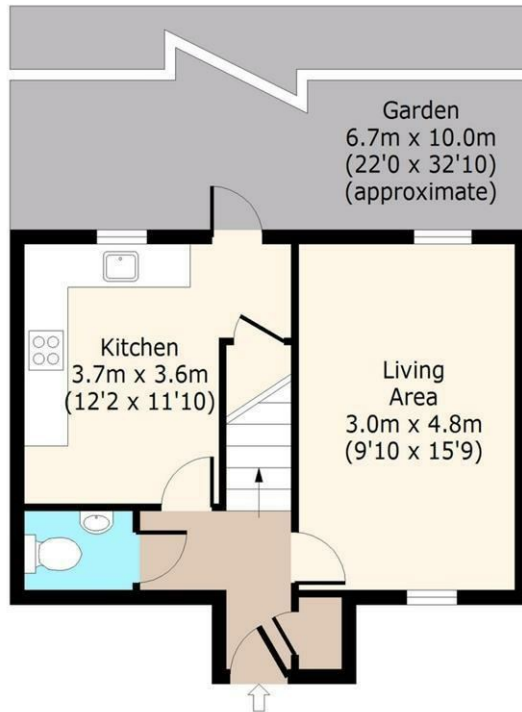


### Ground Floor

Approx. 34 Sq. meters (366 Sq. feet)

### First Floor

Approx. 38 Sq. meters (409 Sq. feet)



Total area: approx. 72 Sq. meters (775 Sq. feet)  
For illustration purposes only - not to scale  
[www.londonpropertyassessments.co.uk](http://www.londonpropertyassessments.co.uk)

# BUTLER & STAG

☎ 01992 667666

🏠 4 Forest Drive, Theydon Bois, Essex, CM16 7EY

✉ [theydon@butlerandstag.com](mailto:theydon@butlerandstag.com)

[www.butlerandstag.uk](http://www.butlerandstag.uk)

IMPORTANT NOTICE - These particulars have been prepared in good faith and they are not intended to constitute part of an offer or contract. We have not performed a structural survey on this property and the services, appliances and specific fittings have not been tested. All photographs, measurements, floor plans and distances referred to are given as a guide and should not be relied upon.